

## ➡ New Modern Textile ISO 9001-2015 - OEKO-TEX C STANDARD 100

New Modern Garments Sargodha (Pakistan) was set up in 1983 under the leadership of dedicated and enterprising businessmen Sh.Noor Ellahi and Sh.Sultan Ali, initially it was humble beginning, meant for the establishment of enviable manufacturing empire in the year to come. By the grace of Almighty Allah, New Modern Garments by maintaining its quality, delivery and prices added an other feather in its cap by establishing a new company, "New Modern textile and Garments" in 2006. in Faisalabad Pakistan . The Office & factory are situated at a very easy approach for our Foreign Buyers and visitors due to its vicinity which is about 20 km from International Airport Faisalabad Pakistan; Faisalabad is Manchester of Pakistan cose of Textile Industrial Estate. We are also going to start our own trading and manufacturing activities in Dubai and K.S.A. very shortly.

New Modern Textile and Garments is working undauntedly and untiring efforts have been put together like a best weaved cloth as we have been offering matchless quality products to introduce and novelty in our specialized field i.e. medical dresses, surgical, patient wears, catering and security uniforms, thermal blankets, towels, quilt covers, flat sheet and pillow case in 100% cotton, polycot ton and cvc. We specialize in various finished fabrics such as Water Repellant ,Wrinkle Free, Raising, Peach Finish, Silicone Finish etc.(complete product list is on page no.64 of catalogue) In this way we have created our own identities which are:

**EXCELLENT QUALITY PRODUCTS**

**COMPETITIVE PRICES**

**ON TIME DELIVERY**

**COMPLETE CUSTOMERS SATISFACTION**

HOSPITAL UNIFORMS

# DR. COATS



**NMT - 001**  
**DR. COAT MALE**

White Lapelle collar , Plastic button , 1  
Chest pocket , 2 Down pockets , Both side  
slash pockets.

**NMT - 002**  
**DR. COAT FEMALE**

White Lapelle collar , Steel button , 1 Chest  
pocket , 2 down pockets

**SIZES**  
S - M - L - XL - XXL



# DR.COATS



NMT - 003  
DR. COAT FEMALE



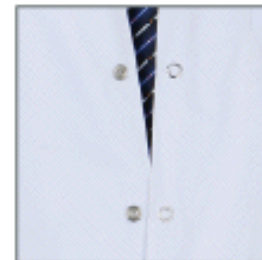
White with stocknitt cuff and collar, Steel snap buttons, 1 Chest pocket 2 down pockets



SIZES  
S - M - L - XL - XXL



NMT - 004  
DR. COAT MALE



White Lapple collar , Steel snap buttons , Sleeves with cuff , 1 Chest pockets 2 down pockets both side slash pockets



SIZES  
S - M - L - XL - XXL

# DR.COATS

NMT - 006  
TECHNICIAN COAT

Aqua green, lapple collar, concealed buttons,  
one chest pocket



SIZES  
S - M - L - XL - XXL



NMT - 005  
DR. COAT FEMALE

White lapple collar, steel snap buttons,  
1 chest pocket, 2 down pockets

SIZES  
S - M - L - XL - XXL



# DR.COATS



NMT - 008  
TECHNICIAN COAT

Bottle green, lapped collar with white epaulettes, front open with 6 steel buttons, 1 chest pocket, 2 down pockets with white trousers



NMT - 007  
DR. COAT MALE

White lapped collar, steel snap buttons, sleeves with cuff, 1 chest pocket, 2 down pocket



# NURSING UNIFORMS



# NURSING UNIFORMS



**NMT - 011**  
**NURSING UNIFORM**  
**MALE - DENTAL**



**TOP**  
White double breasted, round neck with steel snap buttons, long sleeves, 1 chest pocket

**PANT**  
white, 2 side pocket, 1 back pocket



**NMT - 012**  
**NURSING UNIFORM FEMALE**



**TOP**  
White , long sleeves, stockniff cuff and collar, front open with steel snap buttons, 1 breast pocket, 2 down pockets,



**PANT**  
Half elasticatd, without pocket

**SIZES**  
S - M - L - XL - XXL

# NURSING UNIFORMS



**NMT - 015  
NURSING UNIFORM**

**TOP**  
Easy fitting tunic style, male/female, short sleeves, open collar with steel snap buttons, 1 chest pocket

**PANT MALE**  
2 side pocket, 1 back pocket

**PANT FEMALE**  
Full elasticated 2 side pockets

**SIZES**  
S - M - L - XL - XXL



**NMT - 016  
NURSING UNIFORM MALE**

**TOP**  
White lapple collar, short sleeves, front open with plastic buttons, Shoulder with epulates, 1 chest pocket, 2 hip pockets

**PANT**  
White, 2 side pockets, 1 back pocket

**SIZES**  
S - M - L - XL - XXL

# NURSING UNIFORMS



NMT - 010

## NURSING UNIFORM FEMALE

### TOP

White lapple collar, long sleeves, front open with steel snap buttons, 1 breast pocket, 2 hip pockets,

### PANT

White half elasticated

### SIZES

S - M - L - XL - XXL



NMT - 009

## NURSING UNIFORM FEMALE

### TOP

White double breasted, Round neck with steel snap buttons, Long sleeves, 1 breast pocket

### PANT

White half elasticated, 2 side pockets

### SIZES

12 - 14 - 16 - 18 - 20 - 22



# NURSING UNIFORMS

NMT - 019  
HOUSE KEEPING UNIFORM

**TOP**  
Petrol Blue, Laple Collar, Front open with steel snap buttons, Long sleeves with stud cuffs, 2 hip pockets

**PANT**  
Full elasticated without pocket

**SIZES**  
S - M - L - XL - XXL



NMT - 020  
NURSING UNIFORM FEMALE

**TOP**  
Pink shirt collar, Short sleeves, Sleeves and breast with designed fabric, Open from front with plastic buttons

**PANT**  
Pink with full elasticated

**SIZES**  
S - M - L - XL - XXL

# NURSING UNIFORMS



**NMT - 014**  
**NURSING UNIFORM MALE**

**TOP**  
White lapple collar, short sleeves, front open with steel snap buttons, 1 chest pocket, 2 down pockets

**PANT**  
white, 2 side pockets, 1 back pocket

**SIZES**  
S - M - L - XL - XXL



**NMT - 013**  
**NURSING UNIFORM FEMALE**

**TOP**  
White long, chinese collar, long sleeves with stocknitt cuff, front open with steel button, 1 breast and 2 down cross pockets



**PANT**  
Petrol blue half elasticated

**SIZES**  
S - M - L - XL - XXL



# NURSING UNIFORMS



NMT - 017  
NURSING UNIFORM FEMALE

**TOP**  
White lapped collar, short sleeves with green piping, front open with snap concealed buttons, 1 chest pocket, 2 down pockets

**PANT**  
Aqua green fully elasticated



NMT - 018  
NURSING UNIFORM FEMALE

**TOP**  
Attractive striped fabric, front steel snap buttons, long sleeves, 1 breast pocket, 2 hip pockets,

**PANT**  
Petrol blue fully elasticated

# WARM UP JACKETS



NMT - 022  
WARM UP JACKET

Printed jacket, "V" neck long sleeves with stocknitt cuff, 2 hip pockets, front open with steel snap buttons



NMT - 021  
WARM UP JACKET

Printed material, round neck, front open with steel snap buttons, long sleeves with stocknitt cuff, 2 hip pockets



Sizes  
S - M - L - XL - XXL



# WARM UP JACKETS

NMT - 023  
WARM UP JACKET

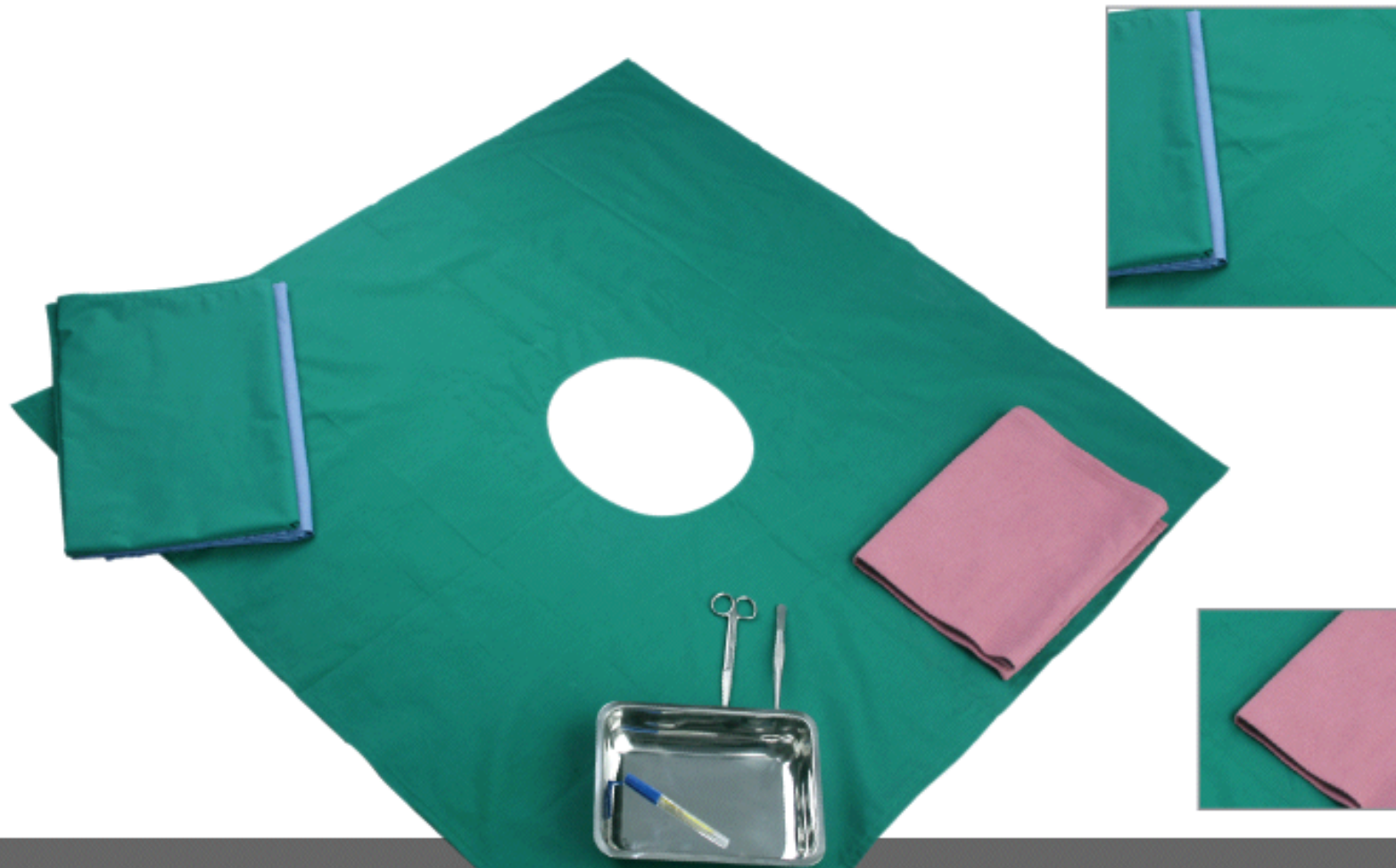
Round neck, front open with steel snap buttons, long sleeves, neck and sleeves with stocknitt cuff



NMT - 024  
WARM UP JACKET

Animal printed material, round neck, front open with steel snap button, long sleeves with stocknitt cuff, 2 hip pockets

# SURGICAL SHEETS



## Colour

- Jade Green
- Ceil Blue
- Lt. Blue

## Sizes

- 50 x 50 cm
- 50 x 70 cm
- 60 x 80 cm
- 70 x 100 cm
- 100 x 120 cm
- 120 x 140 cm
- 140 x 160 cm

# SCRUB SUITS

## SCRUB SUITS

Available in 100% cotton, polyester cotton and polyviscose in different gramage

## SIZES

S - M - L - XL - XXL



# SCRUB SUITS



NMT - 025  
SCRUB SUIT FEMALE

Round neck, shoulder one side open with steel buttons, short sleeves, 2 hip pockets, trouser full elasticated

SIZES  
S - M - L - XL - XXL



NMT - 026  
SCRUB SUIT MALE

"V" neck top, short sleeves, one chest pocket, 2 down pockets, trouser with draw strings

COLOURS  
Jade Green  
Misty Green  
Ceil Blue  
Sky Blue

SIZES  
S - M - L - XL - XXL

# SCRUB SUITS



NMT - 035  
SCRUB SUIT MALE

Ceill blue, front yoke, "V" neck, short sleeves, 1 chest pocket, 2 down pockets, trouser with draw strings



NMT - 034  
SCRUB SUIT FEMALE

Maroon with front pink check fabric design, short sleeves, 2 down pockets  
trouser maroon full elasticated



# SCRUB SUITS



NMT - 033  
SCRUB SUIT UNISEX

Maroon with white stripes, "V" neck short sleeves, 1 chest pocket, 2 down pockets, trouser white full elasticated



## HOSPITAL UNIFORMS

NMT - 031  
SCRUB SUIT MALE

Top with blue snow flauge print, "V" neck, short sleeves, 1 chest pocket, 2 down pockets, trouser fully elasticated



NMT - 032  
SCRUB SUIT FEMALE

Top with pink snow flauge print, round neck, short sleeves, 1 breast pocket, 2 down pockets, trouser full elasticated



# SCRUB SUITS



*NMT - 029*  
**SCRUB SUIT FEMALE**

**TOP**  
Sky Blue, short sleeves, square neck, front open with steel snap buttons, 2 hip pockets

**PANT**  
Sky Blue, fully elasticated without pockets



*NMT - 030*  
**SCRUB SUIT**

Blue printed top, "V" neck, short sleeves, 2 hip pockets, trouser petrol blue, fully elasticated



# SCRUB SUITS



*NMT - 027*  
**SCRUB SUIT MALE**

Reversible top, misty green, "V" neck, short sleeves,  
trouser misty green with draw strings

SIZES  
S - M - L - XL - XXL



*NMT - 028*  
**SCRUB SUIT FEMALE**

Misty green top, shirt collar, full front  
open with zipper, 1 breast pocket with  
zipper, 2 down pockets, trouser fully  
elasticated

SIZES  
S - M - L - XL - XXL

# SURGEON GOWNS



**COLOURS**  
Jade Green  
Ceil Blue  
Light Blue

**SIZES**  
S - M - L - XL - XXL

**FABRIC**  
100% Cotton  
&  
Polyester Cotton

# SURGEON GOWNS



*NMT-036*  
**SURGEON GOWN**

Green full back open with ties, long sleeves with stocknitt cuff, mask with adjustable belt, round surgeon cap, surgeon shoes



*NMT-037*  
**SURGEON GOWN WATER REPELLENT**

Green gown with half front & half sleeves water repellent with stocknitt cuff, back overlapping with ties, pyjama misty green, mask with elasticated grip, round surgeon elasticated cap, surgeon shoes



# SURGEON GOWNS



*NMT - 039*  
**SURGEON GOWN WATER REPELLENT**

Gown with front and 1/2 sleeve water repellent

**Colors**  
Jade Green with misty green W/R  
Ceil Blue with grey W/R



*NMT - 038*  
**SURGEON GOWN**

Green gown, normal length with waist belt, round surgeon cap



# SURGEON GOWNS



NMT - 041  
SURGEON GOWN

Gown round neck long sleeves with stocknitt cuff, waist adjustable belt in 100% cotton & poly cotton, surgeon cap full elasticated



NMT - 040  
SURGEON GOWN

Gown male and female, turned collar, front open with zipper, full sleeve with stocknitt cuff



# PATIENT WEAR



# PATIENT WEAR



*NMT-051*  
**PATIENT PYJAMA SLIT**

Top round neck, long sleeves both sides, open from neck to sleeves bottom, from arm hole to hip bottom with steel snap buttons, Trouser full elasticated, both side from waist to bottom, open with steel snap buttons

**SIZES**  
S - M - L - XL - XXL



Pyjama bottom



*NMT-050*  
**SLEEPING DRESS**

Shirt lapped collar, long sleeves, front open with steel snap buttons, One chest pocket, Trousers full elasticated without pocket

S - M - L - XL - XXL



# PATIENT WEAR



*NMT - 045*  
**PATIENT GOWN**

Sky Blue, long sleeves, front overlapping with velcro

**SIZES**  
S - M - L - XL - XXL



*NMT - 044*

**PATIENT GOWN MALE - ICU**

Blue check, round neck, full front and sleeves open with 30 steel snap buttons, 1 chest pocket

**SIZES**  
S - M - L - XL - XXL



# PATIENT WEAR



*NMT - 047*  
**PATIENT PYJAMA AND TOP**

Reinforced neckline, gripper closure, left chest pocket, front open with steel snap buttons, elastic waist pyjama without pocket

**SIZES**  
S - M - L - XL - XXL



*NMT - 046*  
**PATIENT GOWN PYJAMA FEMALE**

Round neck gown, length till knee, short sleeves, full back open with ties, full elasticated trouser



# PATIENT WEAR

NMT - 042  
PATIENT GOWN

"V" neck, short sleeves  
waist adjustable belt



SIZES  
S - M - L - XL - XXL



NMT - 043  
PATIENT GOWN UNISEX

Printed long sleeves,  
length up to knee, full  
back open with ties

SIZES  
S - M - L - XL - XXL



# PATIENT WEAR



NMT - 048  
MATERNITY DRESS

Patient gown female, pink check, half front open with buttons, front yoke and shoulder with pleats



NMT - 049  
PATIENT GOWN

Round neck, 3/4 sleeves, both sides open with steel snap buttons, full back open with ties, one chest pocket



SIZES  
S - M - L - XL - XXL

PEDIATRICS PATIENT WEAR



**SIZES**

(1 - 2) Yrs

(4 - 6) Yrs

(8 - 10) Yrs

(12 - 14) Yrs

# PEDIATRICS PATIENT WEAR



NMT - 053

**PATIENT PYJAMA SUIT CHILD**

Top front open with steel button, long sleeves  
one chest pocket, pyjama full elasticated



NMT - 052

**PATIENT GOWN CHILD**

Round Neck, 3/4 sleeves, full back open with ties.



# PEDIATRICS PATIENT WEAR



NMT - 054  
PATIENT GOWN CHILD

Front open, half overlapping, long sleeves



NMT - 055  
PATIENT GOWN CHILD

Round neck, Half front open, 3/4 sleeves open with steel stud, 1 chest pocket



# PEDIATRICS PATIENT WEAR



*NMT - 056*  
**PATIENT GOWN CHILD**

Round neck, Half front open, long sleeves open with steel stud



*NMT - 057*  
**PATIENT GOWN CHILD**

Cartoon Print, round Neck, full Back open with ties, 3/4 sleeves



*NMT - 058*  
**PATIENT PYJAMA SUIT CHILD**

Top Front open with steel buttons, long sleeves, 2 down pockets, pyjama full elasticated.





## COVERALLS

*NMT - 059*  
**COVERALL**

Yellow long sleeves, 2 chest pockets with flap, 1 back pocket, all round belt at waist, Cap yellow back adjustable, with elastic

SIZES :  
S - M - L - XL - XXL



# COVERALLS



*NMT-061*  
**COVERALL ROYAL BLUE**

Long sleeves, front open with zipper, 1 neck stud button, 2 chest pocket with flap, 2 side pocket, both side knee pockets, one back pocket, back half elasticated, cap royal blue



*NMT-060*  
**COVERALL BEIGE COLOR**

Long sleeves, front open with zipper, 1 Chest pocket, 2 side pocket, 1 back pocket, back half elasticated belt



Back side of coverall with elasticated belt

# COVERALLS



*NMT - 062*  
**TECHNICIAN SUIT**

Top Royal blue, long sleeves, front open with steel snap buttons, bottom adjustable belt, 2 chest pocket with flap  
Pant Royal blue, 2 side pockets, 2 back pockets



*NMT - 063*  
**COVERALL SKY BLUE**

Long sleeves, front open with zippers, 1 neck stud button, 1 chest pocket with flap, back half elasticated

# COVERALLS



*NMT - 064*  
**JUMP SUIT TARQUISE**

Waist with elasticated belt, 1 center chest pocket with zipper, 2 side pocket, shoulder with adjustable belt with buckles



*NMT - 065*  
**POLO SHIRTS**

100% Cotton, different sizes and colors

# SECURITY UNIFORMS

NMT - 066  
SECURITY UNIFORM

## SHIRT

Long sleeves, 2 chest pockets with flap, Front open with plastic buttons

## PANT

2 small loops, 3 big loops, 2 side pockets, 1 back pocket



1. Security Cap
2. Neck Tie
3. Shoulder Eppulattes
4. Whistle Robe
5. Security Belt

# SECURITY UNIFORMS



NMT-067  
CAMOUFLAGE UNIFORM

## SHIRT

Long sleeves, Adjustable cuffs, 2 Chest pockets, 2 Down pockets with flap, front open with concealed plastic buttons



PANT

4 Small loop, 3 Big loop, 2 Knee cargo pockets with flap, 2 Back pocket with flap, cap normal



NMT-068  
CAMOUFLAGE UNIFORM

## SHIRT

Long sleeves, Adjustable cuffs, 2 Chest pockets, 2 Down pockets with flap, front open with plastic buttons



PANT

4 Small loop, 3 Big loop, 2 Knee cargo pockets with flap, 2 Back pocket with flap, cap normal



FORMAL WEAR  
SUITING

# FORMAL WEAR SUITING



*NMT-070*  
**COAT**

Front open with 4 buttons,  
straight bottom

**PANT**

without pleats, 2 side pockets,  
1 back pocket



*NMT-069*  
**COAT**

Front open with 3 buttons,  
straight bottom

**PANT**

without pleats, 2 side pockets,  
1 back pocket



# WAITER UNIFORM



# WAITER UNIFORM



NMT - 072  
WAITER UNIFORM

**SHIRT**  
White long sleeves, vest jacket black with white stripes, bow tie black, Pant black



NMT - 071  
WAITRESS UNIFORM

**SHIRT**  
White short sleeves, chinies collar, apron short.

**PANT**  
Black, half elasticated.



# COOK UNIFORM



NMT - 075  
**COOK JACKET**

White Cook Jacket for male/female long sleeves, Double breast with Plastic buttons, Trousers black & white check, round cap white with black stripe.



JACKET SIZE  
S - M - L - XL - XXL  
PANT SIZE  
30 - 32 - 34 - 36 - 38 - 40

NMT - 073  
**COOK JACKET**

White Cook Jacket for male/female long sleeves, Double breasted, Trousers black & white check



NMT - 074  
**CHEFF JACKET**

White Cheff Jacket with 2 black lines piping, concealed steel snap button, 1 chest pocket, trousers black, apron white, Chef hat long with pleats



# APRONS



NMT - 076  
WAITRESS APRON

Length = 40 cm



NMT - 077  
DOUBLE APRON

Tabs at sides with adjustable steel snap buttons fastening, One Center Pocket.



NMT - 079  
LONG APRON

1 Centre Chest Pocket.  
Length = 100 cm



NMT - 078  
LONG APRON

1 Center Chest Pocket.  
Length = 100 cm



SHORT APRON

2 Center Patch Pockets.  
Length = 40 cm

SHORT APRON

2 Center Patch Pocket.  
Length = 40 cm



MADE UPS

# TOWELS & BATHROBES

*NMT - 080*  
**BATH ROBE MALE**

Beige Terry Towel material, One size fit to all.

**BATH ROBE FEMALE**

Yellow Terry Towel material, One size fit to all.



# TOWELS & BATHROBES



NMT-087  
TERRY TOWELS

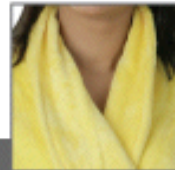
100% Cotton Towels, White and Dyed.



SIZE

12x12", 16x27", 18x30",  
25x50", 27x54", 40x60".

# TOWELS & BATHROBES



NMT - 081  
EMBROIDED BATH ROBE

White color, Belt all round at waist.



NMT - 082  
BATH ROBE TERRY TOWEL

Yellow color, belt all round at waist.



## TOWELS &amp; BATHROBES



NMT - 084  
POOL TOWEL



Blue & White stripes, 100% cotton.



NMT - 083  
EMBROIDERED BATH ROBE

Good quality, Belt all round at waist.



## TOWELS &amp; BATHROBES



NMT - 086

### TOWEL WHITE

100% cotton with hospital name  
in jaquard different sizes.



NMT - 085  
POOL TOWEL

Beige & White, Stripes, 100% cotton.



# BED SHEETS & CELLULAR BLANKETS



NMT - 089  
PILLOW CASE WHITE

SIZE  
20" x 30"



NMT - 090  
BED SHEET

White color

SIZE  
66" x 96"

CELLULAR BLANKET

Blue with jaquard logo

SIZE  
60" x 120"



# BED SHEETS

NMT-096

## DUVET COVER PRINTED

Size 240 x 220cm

Pillow case Size 63 x 63 cm



NMT-095

## QUILT COVER SET

Pintack 100% cotton, white, red and grey

1 Quilt cover size 140 x 200 cm

2 Pillowcase size 63 x 63 cm



# BED SHEETS & CELLULAR BLANKETS

*NMT - 094*

## FITTED SHEET

White with elasticated  
edges in poly cotton and  
100% cotton

### SIZE

60" x 81" + 12"



*NMT - 093*

## BED SHEET

Printed 100% cotton  
and poly cotton

### SIZE

66" x 96"

# CELLULAR BLANKETS



SIZE  
30x40", 60x90",  
60x100", 72x108".



NMT-092  
**JAQUARD THERMAL BLANKET**

100% Cotton.



# LAUNDRY BAGS

NMT - 088  
LAUNDRY BAG

LENGTH : 40"  
WIDTH : 30"  
DIA : 18"



LAUNDRY BAG  
100% polyester,  
100% cotton,  
65% polyester, 35% cotton



# CLEANING MOPS



NMT - 097  
DUST MOPS 100% cotton

White and dyed, Poly  
cotton, Polyviscose

NMT - 098  
HEAD MOP 100% cotton

WEIGHT  
350gm - 450gm - 650gm



NMT - 099  
DUST MOP

With handle and clip

NMT - 100  
DUST MOP

With handle and clip



# COLOUR SWATCHES



Code : NMT 201  
Color : Black  
Width : 59"



Code : NMT 202  
Color : N/Blue  
Width : 59"



Code : NMT 203  
Color : PT/Blue  
Width : 59"



Code : NMT 204  
Color : S/Blue  
Width : 59"



Code : NMT 205  
Color : Hospital Blue  
Width : 59"



Code : NMT 206  
Color : Royal Blue  
Width : 59"



Code : NMT 207  
Color : Green  
Width : 59"



Code : NMT 208  
Color : Jade Green  
Width : 59"



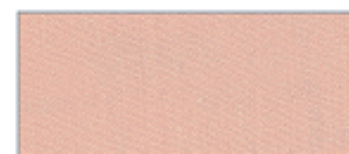
Code : NMT 209  
Color : Maroon  
Width : 59"



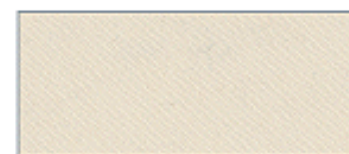
Code : NMT 210  
Color : Red  
Width : 59"



Code : NMT 211  
Color : Pink  
Width : 59"



Code : NMT 212  
Color : Peach  
Width : 59"



Code : NMT 213  
Color : Ivory  
Width : 59"



Code : NMT 214  
Color : Yellow  
Width : 59"

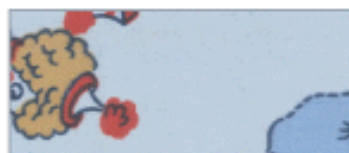


Code : NMT 215  
Color : Lilac  
Width : 59"

# COLOUR SWATCHES



Code : NMT 216  
Color : White Blue Flower  
Width : 58"



Code : NMT 217  
Color : Blue Cartoons  
Width : 58"



Code : NMT 218  
Color : Geometrical Blue  
Width : 58"



Code : NMT 219  
Color : Blue/Red Sq.Rd  
Width : 58"



Code : NMT 220  
Color : Green Cartoons  
Width : 58"



Code : NMT 221  
Color : Blue Snow Flaugs  
Width : 58"



Code : NMT 222  
Color : Red/White Strips  
Width : 44"



Code : NMT 223  
Color : Yellow Cartoon  
Width : 58"



Code : NMT 224  
Color : Pink Snow Flaugs  
Width : 58"



Code : NMT 225  
Color : Green White Check  
Width : 44"



Code : NMT 226  
Color : Red/Blue Sq-Red  
Width : 58"



Code : NMT 227  
Color : Blue White-Check  
Width : 58"



Code : NMT 228  
Color : Brown White Strips  
Width : 34"



Code : NMT 229  
Color : Blue White Strips  
Width : 34"

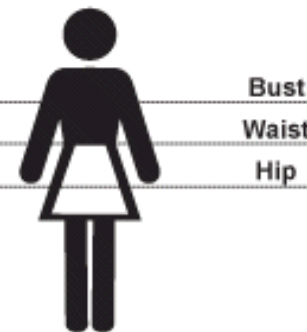


Code : NMT 230  
Color : Panda Print  
Width : 58"

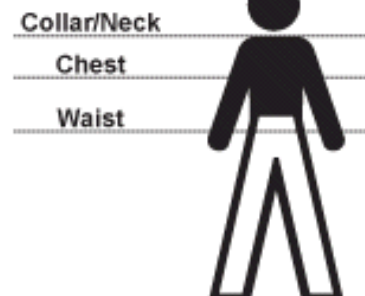
# CHECK YOUR MEASUREMENTS

## FEMALE GARMENTS

SIZE	S	M	L	XL	XXL
	8 - 10	12 - 14	16 - 18	20 - 22	24 - 26
Bust cm	79 - 84	89 - 94	99 - 104	109 - 114	119 - 124
Bust Inches	31 - 35	35 - 37	39 - 41	43 - 45	47 - 49
Waist cm	59 - 64	69 - 74	79 - 84	89 - 96	101 - 106
Waist Inches	23 - 25	27 - 29	31 - 33	35 - 38	40 - 42
Trouser hip cm	86 - 91	96 - 101	106 - 111	116 - 122	127 - 132
Trouser hip Inches	34 - 36	38 - 40	42 - 44	46 - 48	50 - 52



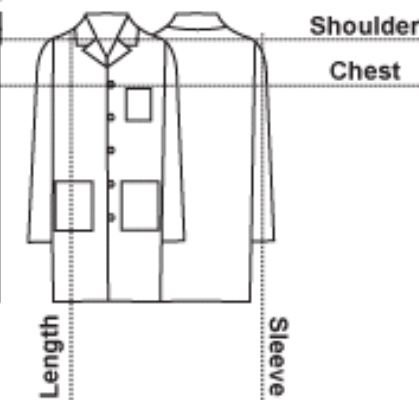
## MALE GARMENTS



SIZE	S	M	L	XL	XXL
	34 - 36	38 - 40	42 - 44	46 - 48	50 - 52
Collar cm	37	39	42	44	47
Collar Inches	14.5	15.5	16.5	17.5	18.5
Chest cm	86 - 91	96 - 101	106 - 111	117 - 122	127 - 132
Chest Inches	34 - 36	38 - 40	42 - 44	46 - 48	50 - 52
Trouser Waist cm	71 - 76	81 - 86	91 - 96	102 - 107	112 - 117
Trouser Waist Inches	28 - 30	32 - 34	36 - 38	40 - 42	44 - 46
Trouser length	Refer to the individual garments.				

## DR.COAT UNISEX

SIZE	S	M	L	XL	XXL
Length cm	99	101	103	105	107
Length Inches	39	40	40.5	41	42
Chest cm	102	112	121	132	142
Chest Inches	40	44	48	52	56
Shoulder cm	55	59	63	65	67
Shoulder Inches	22	23.5	24.5	25	26
Sleeve cm	45	48	51	54	56
Sleeve Inches	18	19	20	21	22



### How to measure:

Whether garments are for male, female or unisex, it is important to measure each person correctly. That way a fit as close to made to measure as possible is ensured. The tape should fit comfortably without putting your fingers between the tape and your body.

**Bust/Chest:** - Measure around the fullest part, under the arms and across the shoulder blades.

**Waist:** - Measure your waist around body, level with the top of waistband.

**Hip:** - Measure your hip about 20cm (8") below the waistline

**Trouser Length:** - From below the excludng waistband to the length you prefer.

# CERTIFICATIONS



## Certification

Awarded to

**NEW MODERN TEXTILE & GARMENTS**  
175-KATCHERY BAZAR, SARGODHA  
PAKISTAN

BVQI certify that the Quality Management System of the above organisation has been assessed and found to be in accordance with the requirements of the standard detailed below

STANDARD

ISO 9001:2000

SCOPE OF SUPPLY

MANUFACTURERS, IMPORTERS & EXPORTERS OF HOSPITAL / HOTEL / LABOUR / SECURITY / SPORTS WEARS, HOME MADE-UPS, TOWEL, BATH ROBE, THERMAL BLANKETS, CLEANING ITEMS & GENERAL ITEMS

Original approval date: 16<sup>th</sup> JULY 2006

Subject to the continued satisfactory operation of the organisation's Management System, this Certificate is valid from:

Date of Certification: 16<sup>th</sup> JULY 2006

Valid until: 15<sup>th</sup> JULY 2007

To check this certificate validity please call: +32 21 771 786 013, after monitoring the performance of the organisation's quality management system in Surveillance Audits the certificate validity will be renewed every year subject to maximum of 36 months from the date of approval.

Further clarifications regarding the scope of this certificate and the applicability of the Management System requirements may be obtained by consulting the organisation.

Certificate Number: 199113 Date: 22<sup>nd</sup> August 2006

Mohammad Shahab SAQEB




Managing Office:  
BVQI 01 Almg, S.A. 2<sup>nd</sup> Floor,  
Tower Bridge Court, 234-236  
Tower Bridge Road,  
London SE11 7TX, England

Issuing Office:  
2102 Palawan  
House No. 45-Block # 718,  
Jinnah Co-operative Housing Society  
Karachi - Pakistan

New Modern Textile & Garments is accredited with the ISO 9001:2000 certificate for its quality management system. We are also member of All Pakistan Bed Sheets & Upholstery Manufacturers Association

Membership # : 16 74 / 06 Serial # : 184

**ALL PAKISTAN BEDSHEETS & UPHOLSTERY MANUFACTURERS ASSOCIATION**  
(Affiliated with the Federation of Pakistan Chambers of Commerce & Industry)

**PROVISIONAL MEMBERSHIP CERTIFICATE**  
(Issued in pursuance of clause 23 of registration (Imports & Exports order, 1952))



**CERTIFIED that** M/S NEW MODERN TEXTILE & GARMENTS  
175-KATCHERY BAZAR, SARGODHA

**THIS CERTIFICATE shall be valid upto the** 30th June, 20 07.

Membership Certificate on the prescribed form will be issued on approval of the Executive Committee of the Association

13th Day of Dec, 20 06.

Signature of Secretary

Countersignature

(Name of Director/Chairman)

APBMA